

MEMBER 1983
TEXAS PRESS ASSOCIATION

THE EAGLE LAKE HEADLIGHT
 (USPS 163-700)
 P.O. Box 67 220 E. Main St. Eagle Lake, Texas 77434-0667
 Published Weekly Every Thursday

John F. and Jeanning Fearing, publishers
Staff
 Marilyn Mueller, Rose Fajkus,
 Paulette Klockman

Subscription Rates:
 Colorado County, and the cities of Lissie, East Bernard, Glen Flora and Egypt . . . \$10.00
 Other residents of Fayette, Lavaca, Wharton and Austin counties . . . \$11.50
 Other Texas residents . . . \$13.00
 Other states . . . \$14.50

Single Copies: 30-cents
 Second Class Postage paid at Eagle Lake, Texas
 Address Corrections should be sent to P.O. Box 67, Eagle Lake, Texas 77434-0667.

1093 Cafe
Under New Management
Mary & Wylie Alley
 Serving lunches, short orders, steaks & enchiladas.
 Orders to go may call **234-7123**
 Hours:
 Sunday-Thursday, 10 a.m. to 10 p.m.
 Friday and Saturday, 10 a.m. to midnight
CLOSED MONDAYS

Let's talk.
 Information about your changing telephone service from Paul Johnson, Community Relations Manager

Divestiture, FCC actions to affect cost of local service

Concern is being expressed today in many places that changes taking place in the telecommunications industry are going to create a rapid increase in rates for local flat-rate service. Unfortunately, that's probably true. We've been saying for years that Long Distance revenues were subsidizing local rates. Because others were saying just the opposite, the public's confusion was understandable. Now that the Bell System is being broken up, the handwriting is on the wall. Revenues from Long Distance will no longer be available to Southwestern Bell as they have been in the past to help keep local rates low.

Beginning this year, the company lost another important revenue contribution from the FCC's order that a separate subsidiary (American Bell) be set up to exclusively market telephone terminal equipment. Southwestern Bell may continue to sell the Bell System terminal equipment it had on hand at the beginning of the year. When it's gone, however, the company won't be able to sell Bell System-manufactured phones, PBX's, etc.

Services will need to be repriced

Therefore, virtually every service Southwestern Bell offers will be repriced to make each contribute sufficient revenue to stand on its own, profit-wise. Local flat-rate service probably is the most underpriced service. Virtually every other service, accepted public policy that local rates should be kept as low as possible to encourage the development of "universal" service. Virtually everyone who has wanted telephone service in recent years could afford a basic local service. Public policy has

now shifted to de-regulation, with competition expected to provide the impetus to take advantage of the fruits of the ever faster technological race.

Long Distance bargains come in minutes, too

Long Distance service may be the first to realize the benefits of true competition in the industry, with rates almost sure to go down once subsidies for local service are withdrawn.

But Bell Long Distance rates within Texas are already a bargain. Surprisingly, our research indicates most people overestimate the cost of an in-state call. Do you? Test yourself. What is the rate for the first minute of a Day-rate call dialed direct (1 +) from a non-coin phone, without tax, say from Amarillo to Brownsville? A. 42¢ B. 59¢ C. 73¢. Hint: It's the same from El Paso to Texas-Kana, Texas.

You don't have to turn the page for the answer. Or even turn the page upside down. It's A. Just 42¢. You can talk as long as you like at 42¢ for each additional minute.

That's one of the nice things about Long Distance. You can virtually tailor-make each call. You can pick the time, type and length of call which suits you and your pocketbook best.

Just a reminder: The new 400 area code goes into use on March 19. You will have additional information included with your monthly statement.

Remember: If you have something to talk about, don't hesitate to drop me a line.

Paul Johnson
 Southwestern Bell
 2200 Ave. A
 Bay City, Texas 77414

Southwestern Bell

Opinion

PUC no longer Wall Street favorite

The skies cleared again last week for Gov. Mark White when two embattled utility commissioners resigned, allowing him to appoint two new commissioners who promise to abolish the controversial fuel costs pass-through on utility bills.

White's foremost campaign pledge was to abolish the clause, but he also promised to appoint "a housewife" to the Public Utility Commission. In the wake of last week's resignations, he nominated El Paso housewife Peggy Rosson, who also happens to be chairman of the El Paso Public Utility Regulatory Board.

Also nominated was former commissioner Al Ewin, an original member of PUC when it was created in 1975, but quit before his term expired.

Erwin predicted abolition of the fuel adjustment clause would be one of the new membership's first actions.

On the day White nominated him, Erwin received a telephone call

from a Wall Street analyst who said his firm was lowering the rating of the Texas Public Utility Commission because of the resignations of commissioners George Cowden and Tommie Gene Smith.

"It was a subtle warning," Erwin said. "My response to him was that I was happy to learn PUC is no longer Wall Street's favorite regulatory body."

Senate 45, House 1

In the Legislature, the action has all been in the Senate. Senators by last week had passed 45 bills compared to one passed by the House.

The reason is the Constitution prevents floor action on bills during the

Senate action

Thus, the Senate has the spotlight to itself and last week it passed some 28 bills alone.

Against protests by the National Rifle Association and to the cheers of law enforcement officers, the Senate voted unanimously to outlaw Teflon-coated bullets, called "cop-killer" bullets because they easily penetrate bullet-proof vests.

The Senate also passed bills which would:

- Establish a state board regulating lay midwives, providing for licensing and prohibiting midwives from using drugs and surgical power plants.
- Nuclear waste now produced here is shipped to a dump in Washington which will close its doors to Texas in a few years.
- Permit county commissioners to levy taxes by a vote of three commissioners, eliminating a requirement that all five members must be present.
- Under the old requirement, a commissioner could walk out of a meeting, leaving his colleagues unable to adopt a budget.
- Double the amounts of credit life insurance sold in Texas for loans.

Nuclear waste

Last week the state hired a Houston-based environmental consulting firm to search for a permanent storage site in Texas for low-level nuclear waste.

The firm will offer five potential sites for a dump scheduled to open in 1988. Low-level waste comes from hospitals and research facilities, not nuclear power plants.

The chairman of the state highways board told the House he preferred raising the gasoline tax by 10 percent, instead of raising car fees for funds to repair the state highways.

State gold

The Senate approved \$7 million for repair of the fire-damaged Capitol, and State Treasurer Ann Richards is thinking about minting gold coins to finance the restoration.

State gold

A 1981 law gives the treasurer the right to commission gold coins—similar to South African Kruggerands—and sell them to commemorate the 1986 Texas Bicentennial.

New job

Former Speaker Bill Clayton, who set a legislative record of eight years with the gavel, now coaches his former colleagues as a registered lobbyist.

Among other clients, Clayton lobbies for the Texas Association of Cotton Producers.

48 Years Ago

[February 23, 1935]

John Dennis, Jr. of Wharton, son of Judge and Mrs. J. H. Dennis of Wharton, died following an operation on a brain tumor.

John's mother was the former Miss Erna Anderson of Eagle Lake. F. M. Dromgole has just been appointed route-man for Rock

Let's Look Back

Eagle Cleaners. Mrs. Mary Davis was complimented on her seventieth birthday by Mrs. Agnes Dromgole last Sunday. Miss Edna Anderson, David R. Wintermann were united in marriage Thursday at St. Paul's Methodist Church.

Mrs. Oscar Wegenhoff of Rock Island entertained her

24 Years Ago

February 12, 1959

Eagle Lake Lions Club March of Dimes Committee, headed by Joe Lee McCreary and Dexter Anderson, reported that Eagle Lake citizens contributed \$803.51 to the 1959 March of Dimes campaign.

The Eagle Lake School Board of Education approved a new one-year contract for Supv. E. B. Gibson and also for High School Principal Willard E. Ethridge at the regular meeting Monday night.

Miss Jeanette Labay, daughter of Mr. and Mrs.

Letters to the editor

Check before digging

To The Editor:

I am writing to ask Eagle Lake area residents to do themselves and their neighbors a favor: check with the telephone company before digging near posted cable warning signs.

Last year, Southwestern Bell telephone cable repair costs in Texas totaled almost \$5 million for more than 6,000 incidents of cable cuts and damage.

Sometimes, cable damage affects only a few people and can be repaired quickly. All too often, however, cable damage means loss of telephone service to major sections of cities or even entire communities. Cable cuts sometimes isolate hospitals, police and fire departments.

A large number of long distance transcontinental coaxial cables run through Texas. The cables carry vital long distance telephone messages and data communications to millions of businesses and people. When those cables are cut, long distance calls are routed in other ways if possible, but a jammed network can result, affecting many callers.

A suggestion for anyone planning digging activities: before plowing, building

fences or terraces, installing sprinklers, land look for telephone company cable warning signs. Also, please watch out for aerial cable when working with tall equipment.

The cable warning signs display a telephone number that may be called to notify the telephone company of any work planned near cable routes.

When we receive a call, we will promptly send someone to pinpoint the exact cable location. We do bill for damage to our cables, and the repair bills can be quite costly.

Please call before work begins near telephone cable. In Texas, ask the operator for the Enterprise 9800 number to report planned digging activities. If a sign is posted for AT&T Long Lines Cable, the number to use is COLLECT (214) 824-4400.

A simple free phone call is the best insurance to help us protect the most convenient and reliable telephone network in the world.

Paul Johnson
 Community Relations Manager
 Southwestern Bell

Voters think more teacher pay, no new gas tax

About 1,100 households in Texas House of Representatives district 90 responded to a questionnaire sent in January to more than 25,000 households of registered voters, according to Rep. Robert M. Saunders.

"We think this constitutes a representative sample of voter sentiment in the district. The survey results are as follows:

- A narrow majority, 51 percent of respondents, is in favor of increasing teachers' salaries above the national average. Most who commented said that teachers' salaries be raised to the national average, but not above it. Seventy-one percent similar salary increase was opposed by 63 percent, but many who commented favored raising tuition for out-of-state students.
- On other items, 80 percent of the respondents favored restrictions on commercial phone solicitation; 78 percent favored non-partisan election of Judges; 72 percent favored increased funding for a state water plan; and 60 percent favored a work permit program for workers from Mexico.
- We are very appreciative of the constituents' responses to the questionnaire. It is one of the best means available for assessing district sentiment concerning some of the issues before the State Legislature.

An increase in student tuition at State Universities

Divestiture, FCC actions to affect cost of local service

Concern is being expressed today in many places that changes taking place in the telecommunications industry are going to create a rapid increase in rates for local flat-rate service. Unfortunately, that's probably true. We've been saying for years that Long Distance revenues were subsidizing local rates. Because others were saying just the opposite, the public's confusion was understandable. Now that the Bell System is being broken up, the handwriting is on the wall. Revenues from Long Distance will no longer be available to Southwestern Bell as they have been in the past to help keep local rates low.

Beginning this year, the company lost another important revenue contribution from the FCC's order that a separate subsidiary (American Bell) be set up to exclusively market telephone terminal equipment. Southwestern Bell may continue to sell the Bell System terminal equipment it had on hand at the beginning of the year. When it's gone, however, the company won't be able to sell Bell System-manufactured phones, PBX's, etc.

Services will need to be repriced

Therefore, virtually every service Southwestern Bell offers will be repriced to make each contribute sufficient revenue to stand on its own, profit-wise. Local flat-rate service probably is the most underpriced service. Virtually every other service, accepted public policy that local rates should be kept as low as possible to encourage the development of "universal" service. Virtually everyone who has wanted telephone service in recent years could afford a basic local service. Public policy has

Check before digging

To The Editor:

I am writing to ask Eagle Lake area residents to do themselves and their neighbors a favor: check with the telephone company before digging near posted cable warning signs.

Last year, Southwestern Bell telephone cable repair costs in Texas totaled almost \$5 million for more than 6,000 incidents of cable cuts and damage.

Sometimes, cable damage affects only a few people and can be repaired quickly. All too often, however, cable damage means loss of telephone service to major sections of cities or even entire communities. Cable cuts sometimes isolate hospitals, police and fire departments.

A large number of long distance transcontinental coaxial cables run through Texas. The cables carry vital long distance telephone messages and data communications to millions of businesses and people. When those cables are cut, long distance calls are routed in other ways if possible, but a jammed network can result, affecting many callers.

A suggestion for anyone planning digging activities: before plowing, building

Sheridan Fire Department elects officers

Officers for 1983 were elected February 15 by members of the Sheridan Volunteer Fire Department at the regular meeting.

Elected are Franklin Walker, president; George Kazmir, chief; Wayne Dupre and David Fuller, assistant chiefs; W. C. Gohke, secretary, and C. W. DeShazo, treasurer.

The year's activities were reviewed and the major goals for the new leadership were presented. The expansion of membership and services is to receive attention.

A tanker truck, donated by Joe Kallins of Garwood, is to be placed in service shortly. This will enable the department to fight fires more efficiently especially

in the areas that are not near water sources.

During the past year the department responded to 32 calls. The Sheridan area encompasses a large amount of open lands that pose a continual threat from fires, especially on weekends during the dry seasons.

New Sheridan officers from left are president Franklin Walker, chief George Kazmir, and assistant chiefs David Fuller and Wayne Dupre.

Lawn & Garden Specials

Lawn & Garden Fertilizer \$5.85
 50 lb. bags of 13-13-13
 50 lb. bags of 12-24-12 \$6.50
 Tomato Plants 15¢

Full line of garden tools and supplies
 Lawn mower and small engine repair

GENERAL HARDWARE & FEED CO.
 312 E. Main, Eagle Lake, TX 77433

Luzier, Inc. "Lucy" Award Winner Invites You to...

Free Glass!! With 10 gallon purchase of Shell gasoline get a FREE sixteen-ounce honey-gold glass. Register for a FREE case of motor oil to be given away March 19. (3 free cases, 3 winners)

Eagle Lake Shell and Auto Services
 720 East Main Eagle Lake

Learn more about our unique line of personalized cosmetics from the winner of the Company's Highest Award.
Luzier, Inc. Call 234-3148

FREE BED WITH PURCHASE OF WEDDING SET**

Mr. G. JEWELERS
 Wharton

★ Mattress & Box Springs From Franklin Furniture \$319.90 retail value
 ** Valued at \$600.00 or more
 Offer subject to withdrawal without notice.

Colorado County Courthouse Report

REAL ESTATE DEED TRANSFERS

Deed, T & R Properties to Antonio L. Garcia et ux, 0.774 acres, James Earl Survey, 124-83

Deed, Beverly Jo Marquart to Allen Gene Marquart, all interest parcel of land in Ludwig Lidstrand Survey et al, 27-83

Deed, Allan Gene Marquart to Beverly Jo Marquart, undivided interest to parcel of land in Colorado County, 27-83

Deed, Beatrice Jackson Armstrong to Robert W. Walters et ux, 54.47 acres, D. Gilleland League, 24-83

Deed, Lillie Schertz Krenek et vir to Earle B. Edwards et ux, 19.86 acres, James Cummins Upper Hacienda League, 128-83

Gift Deed, Orville W. Powers et ux to Gerald S. Powers, 4 acres, J.M. Steiner Survey, 27-83

Gift Deed, Orville W. Powers et ux to Gerald S. Powers, undivided interest to wit, 80.35 acres, T & G N RR Co. Survey, 27-83

Deed, Plantation Land Co. to Edmund C. Tiekens et ux, 47.9616 acres, George Wright Survey, 23-83

Deed, Edmund C. Tiekens et ux Ronald Dean Clough et ux, 47.9616 acres, George Wright Survey, 23-83

Deed, Hubert Odstroel et ux to State of Texas, 0.484 acres, P.R. Spiane League, 29-83

Deed, W.B. Dickey to C. Birton Shaw et ux, Lots 3 & 4, Bk 89, Sheridan, Texas, 2-83

Deed, Charles M. Allen et ux to Leon M. Barnes et ux, Lots 14, 15, 16 & 17, Bk. 48, Sheridan, Texas, 1-21-83

Deed, Leon Barnes et ux to Jerry L. Greak et ux, S 30 feet of Lot 14, Bk. 48, Sheridan, Texas, 2-83

Deed, James Loudon Reel to Stacy A. Mueller et ux, 1.00 acre, G. Strawnsneider Survey, 2-4-83

Deed, John Everett Anderson et ux to Anthony Eugene Hermann et ux, 2.2921 acres, P- Reel's Survey, 2-83

Deed, Melvin Brown to George Hazan et ux, part of Lots 3 & 28, Bk. 2, Griffin Addition, 219-83

Partition Deed, Irene Axel et al to Willie Reed Alley, 21.96 acres, La Beason Survey, 11-20-81

Partition Deed, Irene Axel et al to Elvin Alley, 21.96 acres, L. Beason Survey, 11-20-81

Partition Deed, Rene Axel et al to Woody Alley, 21.96 acres, L. Beason Survey, 11-20-81

Partition Deed, Woody Alley et al to Irene Axel, 21.96 acres, L. Beason Survey, 11-20-81

Partition Deed, Cecil Lewis Mooney et al to Marvin Alley et al, 2.1 acres, James Cummins League, 11-24-82

Deed, James R. Smallwood to Lulu Gienn, 1 acre, Colorado County, 2-9-83

Deed, James Loudon Reel to Stacy A. Mueller et ux, 1.00 acre, G. Strawnsneider Survey, 2-4-83

Deed, John Everett Anderson et ux to Anthony Eugene Hermann et ux, 2.2921 acres, P- Reel's Survey, 2-83

Deed, Melvin Brown to George Hazan et ux, part of Lots 3 & 28, Bk. 2, Griffin Addition, 219-83

Partition Deed, Irene Axel et al to Willie Reed Alley, 21.96 acres, La Beason Survey, 11-20-81

Partition Deed, Irene Axel et al to Elvin Alley, 21.96 acres, L. Beason Survey, 11-20-81

Lease, Zoniz Mae Wicks

Swan to Delta Drilling Co., 4.6 acres, Whiting & Osborne Survey, 10-12-82

Lease, William Abell et ux et al to Julian Evans, 114.09 acres, William Hudgums, 12-8-82

Lease, Donnie R. Wavra et ux to Atlantic Richfield Co., 104.90 acres, Peter Piper Survey et al, 12-28-82

Lease, Diane Wavra Pizarro et vir to Atlantic Richfield Co., 104.90 acres, Peter Piper Survey et al, 12-28-82

Lease, George Mieth et ux to Atlantic Richfield Co., 558.976 acres, Samuel O. Pettus Survey et al, 12-28-82

Lease, Alvin C. Sandifer et ux to Atlantic Richfield Co., 104.90 acres, Peter Piper Survey et al, 12-28-82

Lease, George Mieth et ux to Atlantic Richfield Co., 558.976 acres, Samuel O. Pettus Survey et al, 12-28-82

Lease, Don V. Otting et ux to Atlantic Richfield Co., 23.11 acres, Henrich Krey Survey, 12-23-82

Lease, Gladys Brune et ux to Atlantic Richfield Co., 417.46 acres, Peter Piper Survey, 12-29-82

Lease, Leslie F. Reinson to Atlantic Richfield Co., 114.09 acres, William Hudgums, 12-8-82

Lease, Donnie R. Wavra et ux to Atlantic Richfield Co., 104.90 acres, Peter Piper Survey et al, 12-28-82

Lease, David W. Wavra to Atlantic Richfield Co., 104.90 acres, Peter Piper Survey et al, 12-28-82

Lease, Evelyn Ullmann to Atlantic Richfield Co., 439.94 acres, Peter Piper Survey, 12-29-82

Lease, Isadore A. Brokmeyer to Atlantic Richfield Co., 439.94 acres, Peter Piper Survey, 12-28-82

Lease, Remi Halfmann to Atlantic Richfield Co., 439.94 acres, Peter Piper Survey, 12-28-82

Lease, Evelyn Ullmann to Atlantic Richfield Co., 439.94 acres, Peter Piper Survey, 12-29-82

Lease, Marjita Grace Kilough Brown to Getty Oil Co., 10 acres, J.B. Fenn Survey, 1-12-83

Lease, John E. Kainer et al to Win Energy Corp., 80.56 acres, Colorado County, 12-28-82

Lease, Beatrice Naumann Wilson to The Superior Oil Co., 174.5 acres, G. Herder Survey et al, 1-3-83

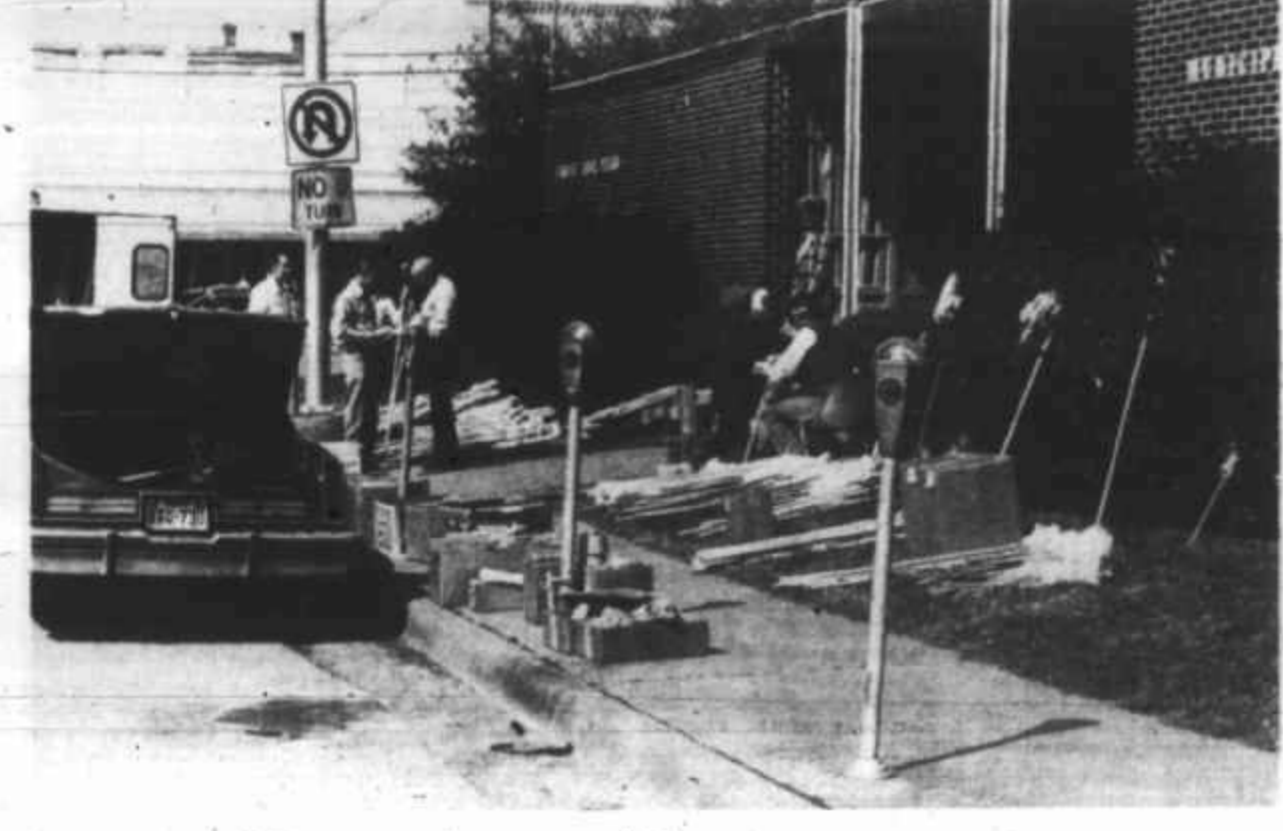
Lease, V.P. Ringer to The Superior Oil Co., 850.80 acres, W.B. Dewees Survey et al, 1-3-83

Lease, E.A. Witter et ux to American Trading & Production Corporation, 315.5 acres, Griffin Wilgus Survey, 1-12-83

Lease, Melvin Fajkus, et vir to Murphy H. Baxter, 76.162 acres, Preston Gilbert Survey, 12-14-82

Lease, Harry Buak et ux to Murphy H. Baxter, 135.03 acres, Preston Gilbert Survey, 12-14-82

Lease, Alfred J. Pihoda et ux to Murphy H. Baxter, 221.27 acres, Preston Gilbert Survey, 12-17-82



Lions sell for charity

It really wasn't cleaning day last week in front of the Municipal building; the Eagle Lake Noon Lions Club was holding its annual pot and broom sale to raise funds for charity. To the left of the utility pole is Gene Brown, and to the right is Judge M. M. Jones helping a customer. Seated at the table to the right with the sun glasses is Roy Dean Van Nort.

Old Timer's to hold meeting

The 14th annual meeting and barbecue of the South Central Texas Old Timer's Baseball Association will be held on Sunday, March 20, 1983, in the American Legion Hall at Wolter's Park in Schulenburg. Registration starts at 1 p.m.

The business-session begins at 2:30 p.m. and will include a memorial service, election of officers, presentation of Hall of Fame certificates and other awards. This year, we will also present "Certificates of Appreciation" to some 20 radio stations in the 20-county area of South Central Texas.

The meal will be \$4.00 per plate. Tickets must be purchased in advance. Deadline for purchasing tickets is Thursday, March 17.

BLOCK SAYS, "LEAVE THE WORRY TO US!"

H & R BLOCK with more than 25 years tax preparation experience has developed a system which strives to put the tax laws to work for each H & R BLOCK client.

BLOCK'S system, plus a team of theory and math checkers, is combined with constant personal training which results in a BLOCK guaranteed tax return — if BLOCK should make an error, you would pay only the additional tax, and BLOCK will pay any interest or penalty that is incurred.

Our office is now preparing 1982 tax returns with the H & R BLOCK guarantee. Visit our conveniently located office and then leave the worrying to us.

H & R BLOCK
 115 E. Main Eagle Lake 234-3420

FREE BED WITH PURCHASE OF WEDDING SET**

Mr. G. JEWELERS
 Wharton

★ Mattress & Box Springs From Franklin Furniture \$319.90 retail value
 ** Valued at \$600.00 or more
 Offer subject to withdrawal without notice.

SPALINGER HARDWARE
 123 E. Main St.
 Eagle Lake, TX 77434
 Phone 234-2566

BRAND

888

2

F2

Our Special Sale Continues

You still have through Saturday to take advantage of our special sale items noted in last week's circular.

We have extra copies if you missed yours.

SPALINGER HARDWARE
 123 E. Main Eagle Lake 234-2566